

e - Saksham

(A Digital Learning Platform for Planning of INRM Works using GIS under MGNREGS)

GIS & RS based integrated NRM planning

The GIS (Geographical Information System) based approach for INRM (Integrated Natural Resource Management) planning was developed with the support of GIZ, to assist MGNREGS (Mahatma Gandhi National Rural Employment Guarantee Scheme) technical functionaries to survey topographical, hydrological and biophysical aspects, and assess the scope of INRM interventions under MGNREGS. The objective is to enhance the impact and effectiveness of NRM works and assets created in rural areas under MGNREGS. The GIS & Remote Sensing (RS) based INRM planning process was one of the components under 'Saksham Capacity Development Programme' launched on 19th June 2017, and was rolled out in 27 States and 1 Union Territory. It is providing scientific inputs to the community based participatory planning process under MGNREGS at the grass root level.

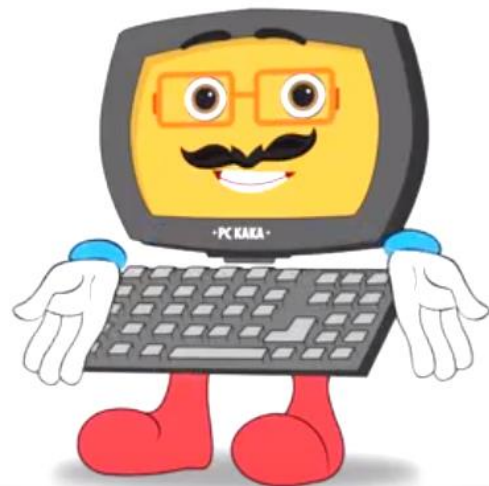
The major advantages of the GIS based planning include:

- ✚ A robust tool for spatial planning at the Gram Sabha/ Gram Panchayat level.
- ✚ Supports well-informed decision making through correlating spatial and non-spatial information.
- ✚ Helps to determine the areas where MGNREGS works need to be implemented on priority.
- ✚ Saves cost and time, as holistic information is available on a laptop with internet connection on real-time basis.

e-Saksham

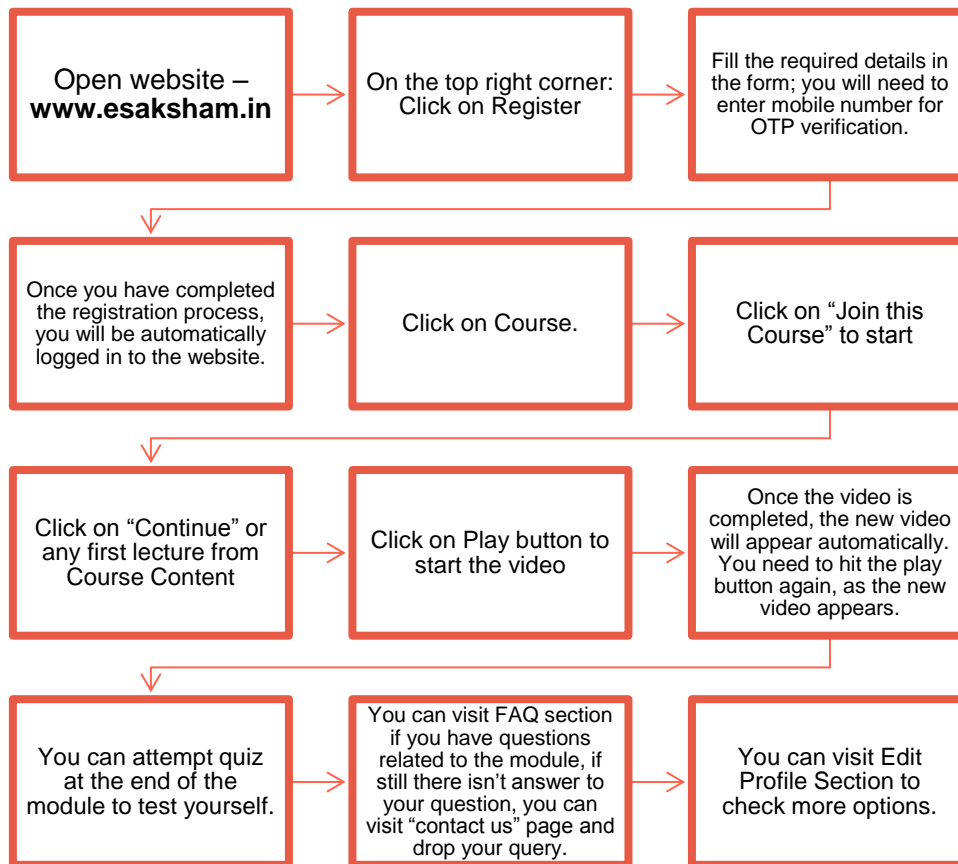
Electronic-Saksham is a Massive Open Online Course developed primarily for building the capacities of MGNREGS technical functionaries (Gram Rozgar Sevak, Barefoot Technician, Technical Assistant, Engineer etc.) nationwide on the GIS based planning process. The course includes six modules and seventeen video tutorials in English and Hindi, and is approximately 2.20 hours of duration.

- ✚ Every module includes a **FAQ** session for immediate doubt clarifications, and an e-mail based helpline system for further technical handholding.
- ✚ Every participant will have the opportunity to attempt a **quiz** at the end of each module to assess their understanding.
- ✚ A **discussion forum** and a section for downloading NRM planning related documents, thus enhancing the scope for learning and sharing knowledge.



The Beta version of e-Saksham will be accessible through www.esaksham.in, as well as a mobile application that can be downloaded from the android play store.

User Guide



Few tips

- ✚ You can change the language to English or Hindi, from the button at top right corner.
 - ✚ For General Query related to website, you can visit **FAQ** section on homepage.
 - ✚ To download important documents related to the course, you can visit the **Downloads** page.
 - ✚ You can visit **Important Link** Icon to get the link to other related websites.
 - ✚ To download Android App, you can click on **Download Mobile App**.
 - ✚ You can visit **Forums** link to post your queries and discuss about the course, or GIS based INRM planning with your colleagues and other enrolled participants.
 - ✚ For any further assistance, please drop an email to team@geomgnrega.in.
-